

NEXT DRILLING TO ADVANCE EMERGING REGIONAL TARGETS

- Planned 5,000m aircore program at Boundary Fence, Brumby and Central Park prospects to commence in early May.
- Additional aircore drilling planned at Gidgee Flat discovery, pending receipt of Program of Work approval.
- Detailed aeromagnetic survey scheduled to start at Yowereena within the next fortnight.
- A total of 23 RC drill holes for 4,240m successfully completed at the Contessa and Gidgee Flat with first assay results expected in early May.
- New 800m long, completely untested zone of prospective strike identified along key structural contact at Gidgee Flat

West Australian gold explorer Lodestar Minerals Limited (“Lodestar” or “the Company”, ASX:LSR) advises that an aircore drill program at the Boundary Fence, Brumby and Central Park prospects is scheduled to commence early in May. The program will follow-up the significant oxide gold intercepts achieved in the most recent drilling at the three prospects, completed in December 2017 (see Lodestar’s ASX announcements dated 27th December 2017, 10th July 2017 and 1st December 2016).

The Central Park and Brumby prospects are located within Lodestar’s 100%-owned Ned’s Creek project and the Boundary Fence prospect is located within M52/782, a granted mining lease forming part of the Yowereena farm-in with Vango Mining Limited (ASX:VAN), where Lodestar is earning an 80% interest (see Figure 1).

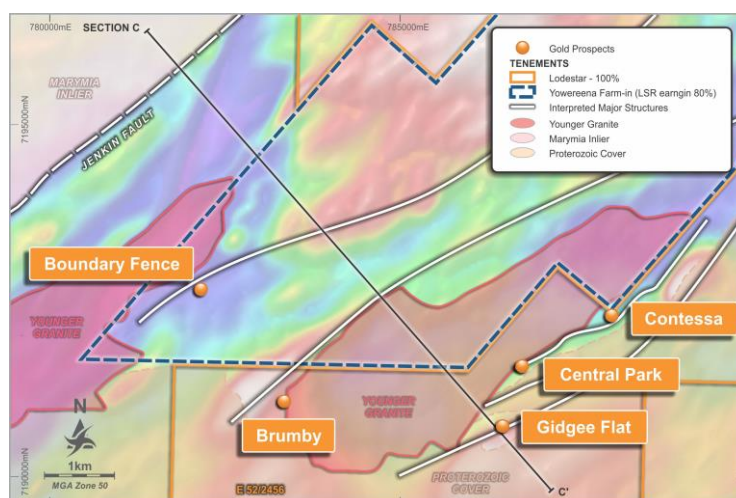


Figure 1: Prospect location showing granite, major shear zones and magnetic greenstone on aeromagnetic image.

Ned's Creek

Central Park and Brumby are located on the structurally modified contact of the Contessa granite and have reported significant drill intercepts from previous aircore drilling, including:

Central Park

- 4m at 8.69g/t Au from 28m and 4m at 1.61g/t Au from 44m
- 4m at 3.35g/t Au from 36m*
- 4m at 1.45g/t Au from 32m*
- 4m at 1.37g/t Au from 72m*
- 5m at 2.15g/t Au from 35m and 5m at 8.90g/t Au from 30m

(* vein quartz hosted mineralisation)

Brumby

- 8m at 1.1g/t Au from 24m
- 16m at 2.1g/t Au from surface, including 4m at 6.3g/t Au from 12m
- 4m at 1.0g/t Au from 20m and 3m at 1.6g/t Au from 40m

Drilling at Central Park and Brumby will test primary gold targets where mineralised quartz veins have been identified and where testing of the granite contact and associated mineralisation is incomplete (see Figures 2 & 3).

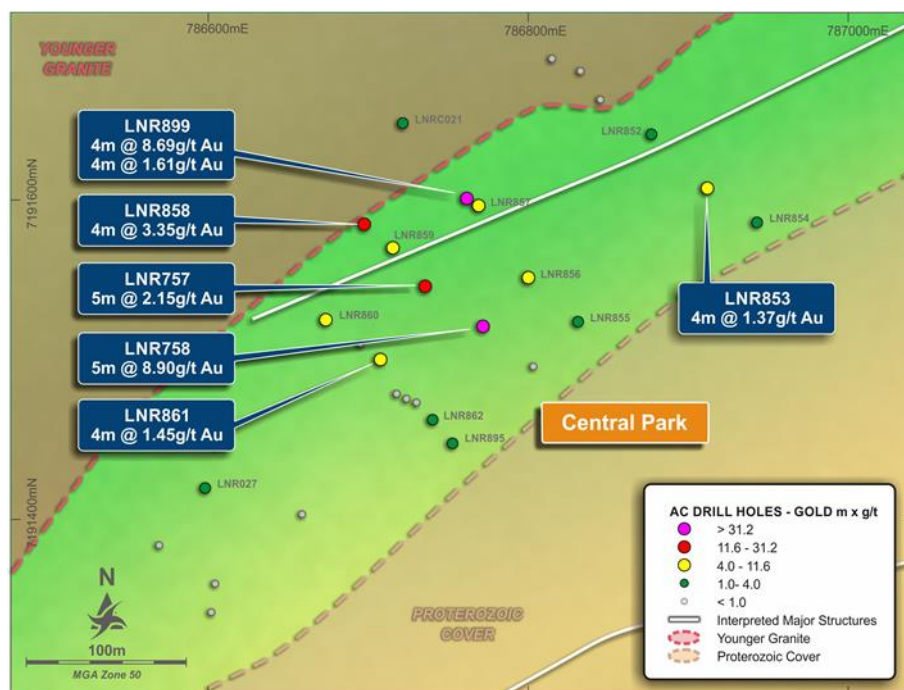


Figure 2 Central Park prospect highlighting existing aircore gold intercepts within the corridor between the Contessa granite and younger sediments. Aeromagnetic image MGA94.

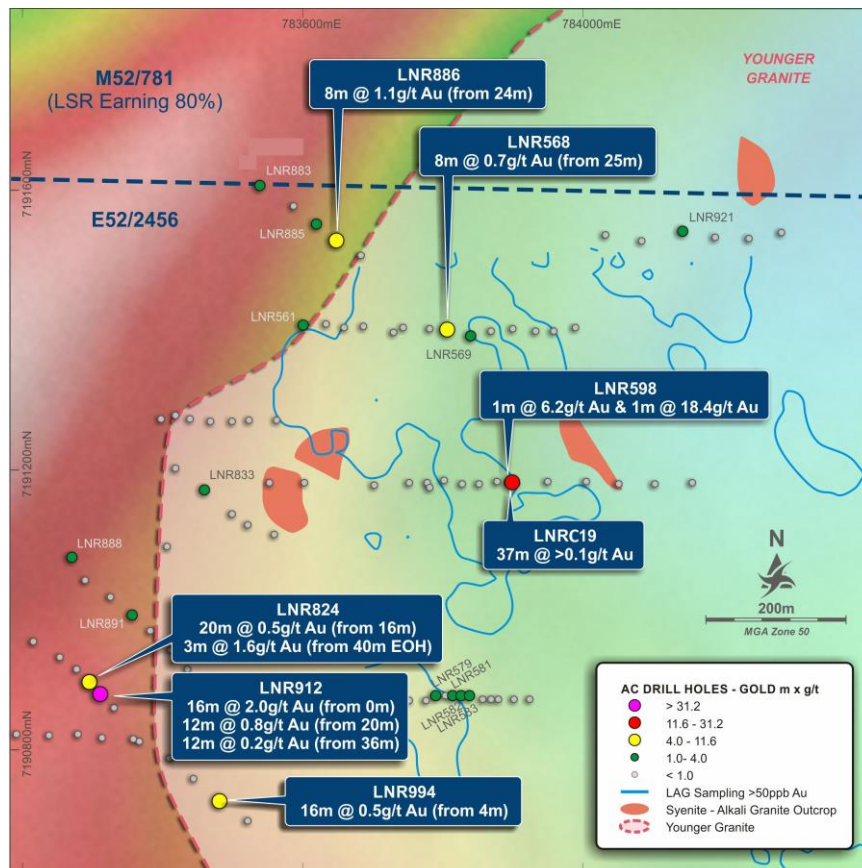


Figure 3: Brumby prospect showing gold intercepts in aircore drilling and target granite contact on aeromagnetic image.

Boundary Fence

The Boundary Fence prospect hosts shear-related gold mineralisation and is located near the margin of an elongate, late granite intrusion that shares similar geochemical features with the Contessa granite. Historic RAB drilling reported widespread gold mineralisation and recent aircore drilling completed by Lodestar has identified significant near-surface, oxide gold within the area targeted by historic drilling:

- 16m at 1.6g/t Au from 28m, including 4m at 5.6g/t Au from 28m
- 12m at 1.7g/t Au from 48m, including 4m at 4.6g/t Au from 48m

The follow-up aircore drilling program is focussed on testing a large area around these two shallow intercepts, originally drilled on a 50m hole spacing, to test for extensions to mineralisation.

Ongoing Exploration

A detailed aeromagnetic survey is scheduled to be flown over the northern Ned's Creek and Yowereena tenements commencing in late April, dependent on weather conditions. The survey will improve the geological interpretation of large areas under shallow transported cover and assist in locating the extensions of major mineralised shear zones for future drill targeting.

The RC drilling campaign at Contessa and Gidgee Flat was completed in early April. A total of circa 3300 samples have been transported to the laboratory and given the large number of samples submitted, it is expected that it may take up to four weeks for all results to be received. Initial results from the program are expected early May.

During the latest RC program it became increasingly evident that the likely structural control for gold mineralisation extends a further 800m to the southwest and northeast of the area being tested. This additional strike has never been tested by drilling and is a priority area for first pass aircore drilling ahead of likely further RC drilling.

A Program of Work has now been submitted for aircore drilling to test this zone, initially over a distance of 800m. Depending on the timing of approval, the Gidgee Flat program may be completed as part of the drilling program planned for May.

Contacts

Bill Clayton

Managing Director
info@lodestarminerals.com.au
+61 8 9435 3200

Media enquiries

Michael Vaughan, Fivemark Partners
michael.vaughan@fivemark.com.au
+61 422 602 720

About Lodestar

Lodestar Minerals is an active Western Australian gold explorer with a prospective tenement package spanning more than 2,000km² at the edge of the Pilbara and Yilgarn Cratons. Lodestar has three main projects – Ned’s Creek, Camel Hills and Imbin – and is also earning an 80% interest in Vango Mining’s Yowereena gold project which is adjacent to Ned’s Creek.

Lodestar’s main focus is Ned’s Creek where it has made greenfields gold discoveries at the Contessa and Gidgee Flat prospects. Contessa is one of many partly explored gold anomalies located within a large shear zone developed along the margins of a 6 kilometre long, elongate composite granite intrusion that is highly prospective for intrusion-related gold mineralisation.

Competent Person Statement

The information in this report that relates to Exploration Results is based on information compiled by Bill Clayton, Managing Director, who is a Member of the Australasian Institute of Geoscientists and has sufficient experience of relevance to the styles of mineralisation and the types of deposits under consideration, and to the activities undertaken, to qualify as a Competent Person as defined in the 2012 Edition of the Joint Ore Reserves Committee (JORC) Australasian Code for Reporting of Exploration Results, Mineral Resources and Ore Reserves. Mr Clayton consents to the inclusion in this report of the matters based on the information in the form and context in which it appears.

The information in this announcement that relates to previously released exploration results was disclosed under JORC 2012 in the ASX announcements dated 27th December 2017 “Confirmation of Major Gold System 35km from Plutonic Belt”; 10th July 2017 “Widespread high-grade gold results advance Neds Creek target” and 1st December 2016 “Contessa – Brumby Aircore Drilling Results”. These announcements are available to view on the Lodestar website. The company confirms that it is not aware of any new information or data that materially affects the information included in the original market announcement. The company confirms that the form and context in which the Competent Person’s findings are presented have not been materially modified from the original market announcement.